

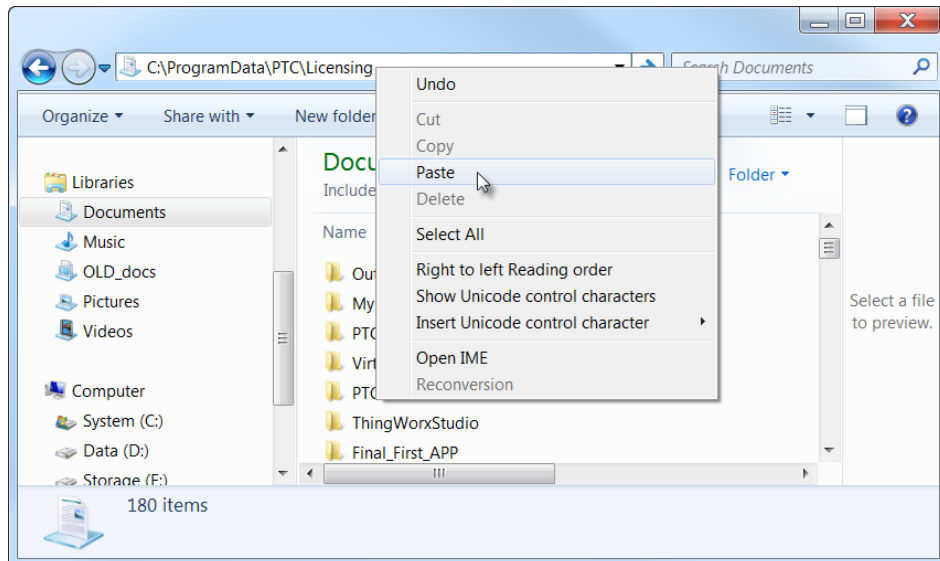
PTC Creo 11.0 - Student Edition - Quick Installation Guide

1. Download the **PTC Creo 11.0** zip file:

- www.ptc.com/appserver/auth/it/esd/academicFree.jsp
 - If necessary, enter your PTC username (your email address) and password, and then click **LOG IN**.
Create an account at www.ptc.com/appserver/common/account/ptcacademic.jsp
 - Accept the Export Agreement and then click **Continue**.

2. **If this is the first time you install Creo please jump to the next step.** If you had older Creo editions installed on your computer, please go to **C:\ProgramData\PTC\Licensing** and delete all the older licenses (you can also move them to another folder until the Creo 11.0 is installed). After the folder is empty you can proceed with the next step.


*Please note that **ProgramData** is a hidden folder. The easy way to access this location is to simply copy **C:\ProgramData\PTC\Licensing** and paste it in the Windows explorer.*



3. **Unzip** the downloaded zip file (MED-100WIN-CD-480_11-##_Win64.zip):

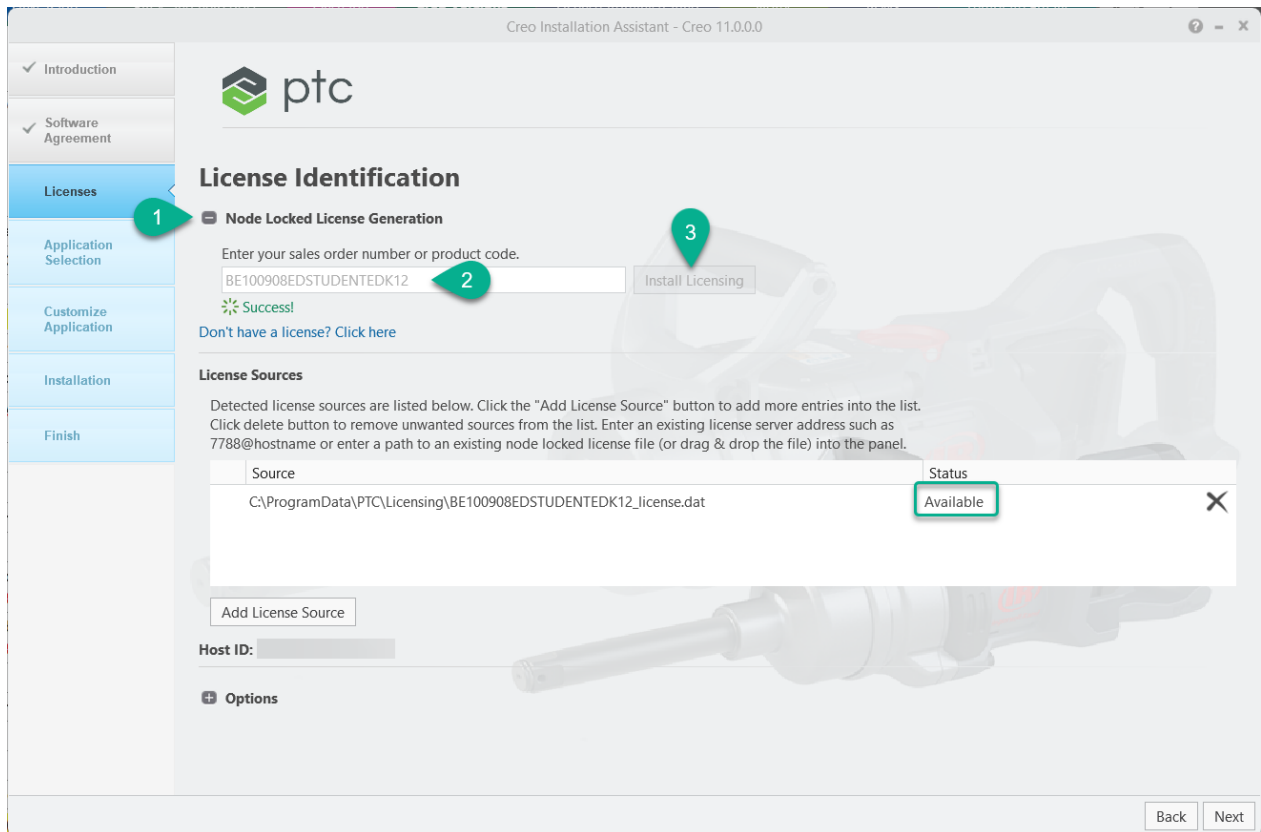
represents the build code of Creo you downloaded. The actual number will vary as additional Creo builds are released.

Right-click the downloaded zip file, select **Extract All** and then select a location where the files will be unzipped to. *Select a location you can easily access, such as your Desktop.*

- Use Windows Explorer to open the resulting **MED-100WIN-CD-480_11-##_Win64** folder.
This folder can be copied to a shared drive, DVD or thumb drive and then be used to install the software on other computers.
- Temporarily disable all firewall, anti-virus and anti-spyware applications.
- **Run setup.exe**. Do **NOT** use setup-schools.exe, this will cause errors.
 - **Right-click setup.exe** and select  **Run as administrator** from the pop-up menu.

4. From the PTC Installation Assistant dialog box:

- Select **Install new software** and click **Next**.
- **Accept** the license agreement and click **Next**.
- Click the **+** in front of **Node Locked License Generation**
- In the field that appears below, enter the product code **BE110908EDSTUDENTEDK12** and then click **Install Licensing**.



- Enter your PTC username (your email address) and password.
- Click **Login**.
- When you see the **“Success!”** message, click **Next**.
- In the application list, deselect all the applications you do not need, and then click **Install**.
- After the installation is complete, click **Finish**.

You are now ready to use PTC Creo 11.0 - Student Edition

- For additional resources, please visit www.ptc.com/education
- If you need technical support, please visit [Support Forum](#)